



# MONTHLY MEMBERSHIP PROGRESS REPORT

District 10

Results as of: 5/31/2017

GMT: THOMAS MATNEY

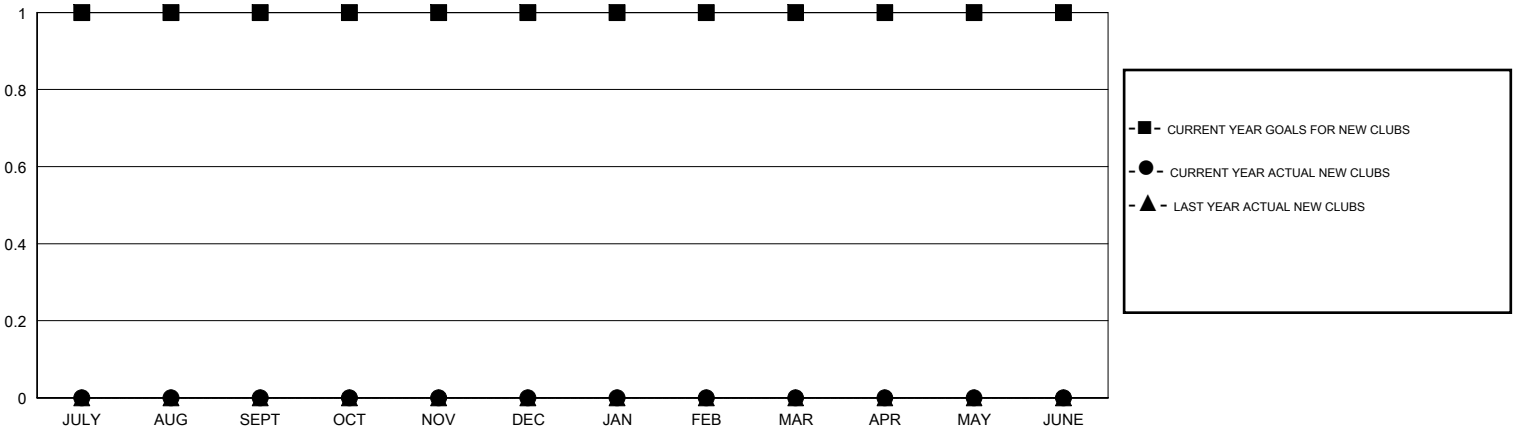
LOCATION MICHIGAN

GMT CA

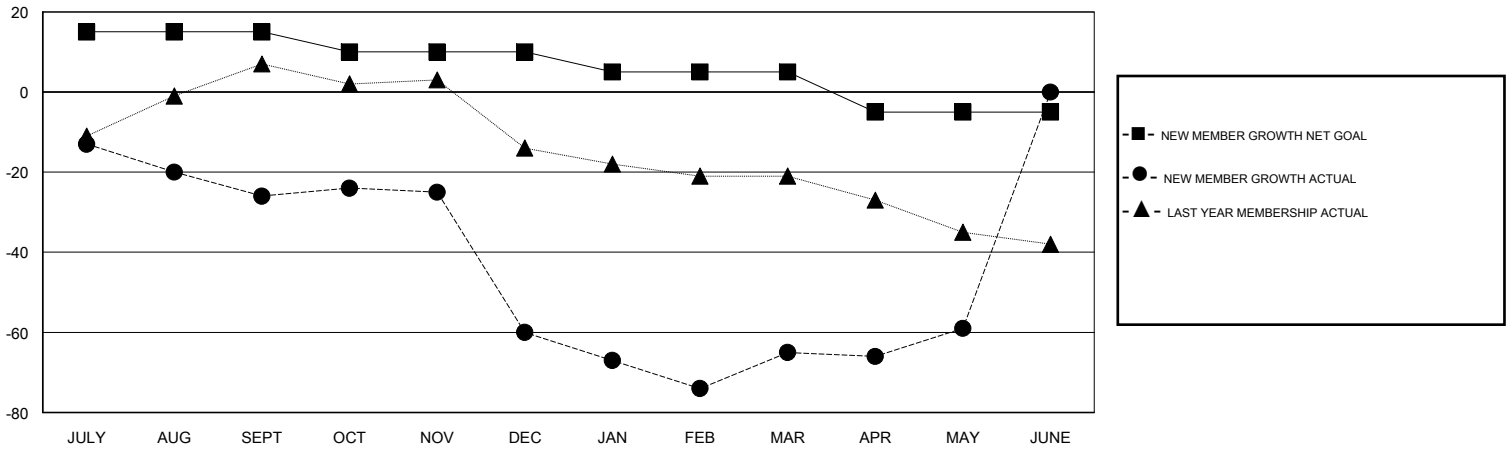
Clubs			
RESULTS FOR 2016-2017			
QUARTER	NEW CLUB GOAL	NEW CLUBS	DROPPED CLUBS
JULY/AUG/SEPT	1	0	0
OCT/NOV/DEC	0	0	2
JAN/FEB/MAR	0	0	0
APR/MAY/JUNE	0	0	0

Members			
RESULTS FOR 2016-2017			
QUARTER	NEW MEMBER GROWTH NET GOAL (not reinstated or transfers)	NEW MEMBER GROWTH ACTUAL (not reinstated or transfers)	DROPPED MEMBERS ACTUAL (including transfers)
JULY/AUG/SEPT	15	23	49
OCT/NOV/DEC	-5	20	54
JAN/FEB/MAR	-5	30	35
APR/MAY/JUNE	-10	21	15

GOALS AND ACTUAL NEW CLUBS CUMULATIVE



GOALS AND ACTUAL MEMBERS CUMULATIVE



DROPPED CLUBS: 2	31 CLUBS OF 57 ADDED 1 OR MORE NEW MEMBERS	<u>GENDER DISTRIBUTION</u>	
DROPPED MEMBERS		MALE	1,127 (75.13%)
DECEASED	21	FEMALE	373 (24.87%)
CLUB CANCELLED	26	TOTAL FAMILY UNIT MEMBERS	
OTHER	106	241	
TOTAL	153	FAMILY MEMBERS PAYING HALF DUES	
		123	

[CLICK HERE FOR CUMULATIVE MEMBERSHIP DATA](#)